



WILLISAU

SWITZERLAND

lookbook





WILLISAU
SWITZERLAND

*Limitless inspiring possibilities
that turn your dream living spaces
into a reality.*



deutsch



english



français



nederlands

006 | TABLE OF CONTENTS
 008 | COMPANY
 010 | PEOPLE
 012 | HOME
 014 | DESIGN DIVERSITY
 016 | WOOD SELECTION



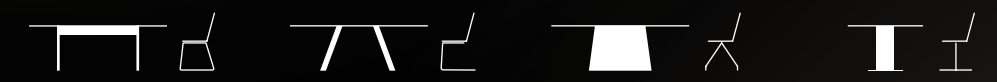
020 | DINO
 026 | VARINO
 030 | MALEO
 036 | PRATO



080 | LEVO
 084 | RONDO
 084 | POLYGON
 088 | AURORA
 089 | DINO



044 | TORINO
 056 | ALIANO
 058 | ARONA
 060 | LINEA
 066 | PILASTRO
 072 | AURORA
 076 | MODENA 40



090 | OVERVIEW OF TABLES
 092 | OVERVIEW OF SEATING FURNITURE
 094 | MATERIALS

About us



DESIGN
AWARD



interior
innovation
award



GOOD
DESIGN



GERMAN
DESIGN
AWARD



DESIGNPREIS



reddot design award



WILLISAU
SWITZERLAND

Where tradition meets modernity

WILLISAU SWITZERLAND has been combining the finest craftsmanship with innovative design since 1928. In the heart of Lucerne's hinterland, we create tables and chairs that tell stories – from one generation to the next, masterfully finished in every detail. Our products stand for the highest quality and custom solutions that enhance and inspire everyday life. Discover the combination of timeless elegance and innovative functionality – created for people who value the extraordinary.

BORN IN THE HEART.

GROWN IN THE MIND.

FINISHED BY HAND.

WILLISAU SWITZERLAND
Your partner for exclusive tables and chairs.



swiss made



Every piece of furniture tells a story – yours.
Patrick Brunner, CEO & Owner



Inspiring craftsmanship

At WILLISAU SWITZERLAND, craftsmanship is more than just a promise. It is a living reality. Precise craftsmanship and the selection of the finest materials take centre stage at every stage of our furniture production process. Exercising the utmost care, we create pieces that not only impress due to their timeless beauty, but also through their longevity.

Appreciation, solidarity and loyalty – our foundations

At WILLISAU SWITZERLAND, quality means more than just creating outstanding products. It also involves a deep connection to the people who make them. Our employees, many of whom have worked with us for decades, embody these values and passionately pass on their craftsmanship and experience. Their loyalty lies at the very heart of our tradition and innovation. We are proud of our team and grateful for the solidarity that makes us what we are: a brand built on trust, respect and first-class craftsmanship.



*The people
in the background*



Our home

Willisau – where charm meets nature

Willisau, a picturesque small town in the canton of Lucerne, is nestled in the idyllic Napf landscape. This is where culture, history and nature unite in perfect harmony, lending the town its unique charm.

Regional value creation – responsibility that unites us all

At WILLISAU SWITZERLAND, we attach a great deal of importance to local economic cycles. By working together with regional suppliers, we create a close connection to the region, strengthen the local economy and, at the same time, preserve valuable artisan traditions.

Sustainability – responsibility for tomorrow

At WILLISAU SWITZERLAND, the environment and quality go hand in hand. We use sustainable materials and rely on environmentally friendly production processes. Our furniture does more than just make living spaces more beautiful. It also actively contributes to protecting our planet. For an inspiring future.



Unparalleled variety

Table frames



A wide range of different frame designs is available, positioned in the corner area or elegantly recessed under the table top as an elegant centre leg.

Extendible or fixed



We offer the perfect solution to meet every requirement – whether fixed or extendible. Although tables with extension leaves are primarily presented on the following pages, they are all also available as fixed versions.

Shapes



Rectangular, rounded, circular or organic – with us, you'll find the exact table to perfect your living environment. Tables that are fixed or extendible, inspired by nature, and refined or robust – we offer the perfect solution to suit every style.

Impressive diversity and flexibility
We offer an unrivalled selection of materials, designs and technical possibilities. At WILLISAU SWITZERLAND, you'll find a wide range of products that leaves nothing to be desired. Each piece of furniture can be customised according to your personal preferences and characterises your unique personality. Whether you're after a special type of wood or hard-wearing surfaces – we have what you're looking for.

WILLISAU SWITZERLAND – we turn your dream living spaces into a reality.



The preferred choice



We can give you the best advice. Get inspired and choose the wooden plate that you like the most. Your perfect piece of furniture is waiting for you.



Wood according to your wishes – individual and unique
In Willisau, we offer you the opportunity to choose from our current stock of wooden tops in American walnut and European oak. Various sizes, top thicknesses and designs – with or without character features – are available, ready to produce your table.

Custom solutions to meet special requirements

If your desires extend beyond our stock inventory, we'll craft your table top individually. Whether you'd like longer wooden tops or special types of wood like ash or cherry, or require us to meet your specific grain and character feature needs – we implement your vision with the utmost precision, and, in so doing, create a table that's the perfect fit for you and your living situation, both visually and in material terms.



*Fixed and extendible
dining tables*



Table DINO - Chair AMBIENT

DINO

A no-frills purist

Let's move away from the superfluous, and get back to the essence: DINO is the perfect answer to the zeitgeist. With its clear lines and minimalist design language, it embodies purist elegance without compromise. Its slender, delicate shape stands firm and stable – creating a table that impresses due to its simplicity and effortlessly blends into a wide variety of living and working environments.

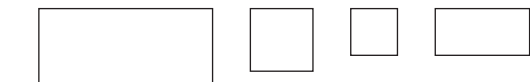




Table DINO- Chair AMBIENT

DINO



Whether used in the kitchen / living room, home office, loft or open-plan office – DINO adapts to any environment without ever seeming intrusive. Its understated appearance makes it a true master of combination, harmoniously integrating into any space.

Edge profiles



Edge profile in a single colour – for all varnished and coated surfaces such as HPL and FENIX, not to mention solid woods. The simple, uniform colour scheme ensures an elegant and timeless look that can be combined in a variety of ways.



Edge profile in sandwich construction, support panel colour-matched – for all applied surfaces such as glass, MDi and ceramic. The colour-coordinated support panel lends the profile a harmonious aesthetic, while the layers add subtle depth and sophistication to the design.

plain or colourful



Edge profile in sandwich construction, support panel black – for all applied surfaces such as glass, MDi and ceramic. This edge profile features a black support panel that creates a delicate table edge effect due to its slim appearance and ensures a modern, elegant look.



Edge profile in sandwich construction, support panel with eyeliner red accents – for all applied surfaces such as glass, MDi and ceramic. With a support panel in red or other colours as an eye-catcher, this edge profile makes a stylish statement and gives the table a striking, individual touch.

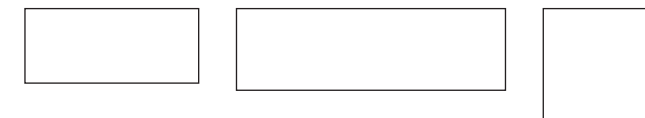


Table VARINO- Chair LENI

VARINO

VARINO in solid wood – impressive and innovative high-tech construction

Its precisely slanted edges make the table top appear to float above the solid square legs. A patented cable pull ensures perfect balance by compensating for the 28 mm thick solid wood expanding and contracting – for a table top that's always perfectly straight.



VARINO



Interior innovation award
GERMAN DESIGN AWARD
DESIGNPREIS
reddot design award



This table is anything but ordinary! Homogeneous, sensual and unmistakable, the VARINO combines functionality with award-winning Willisau extravagance – customised to meet the highest expectations.



Table VARINO - Chair PENDOLA



Table MALEO - Chair VINCI

MALEO

Timeless. Versatile. MALEO.

An honest, strong character – MALEO embodies the purest form of timeless design. Its low-key style makes it the ideal companion for any dining group and any interior. Whether used in the kitchen / living room, office or dining room, MALEO fits in seamlessly and scores top marks due to its versatility.

The table top, which is slightly offset from the angular frame, gives MALEO a hint of subtle sophistication. The combination of materials, textures and colours allows it to either remain discreet in the background or deliberately make a statement – the choice is yours.



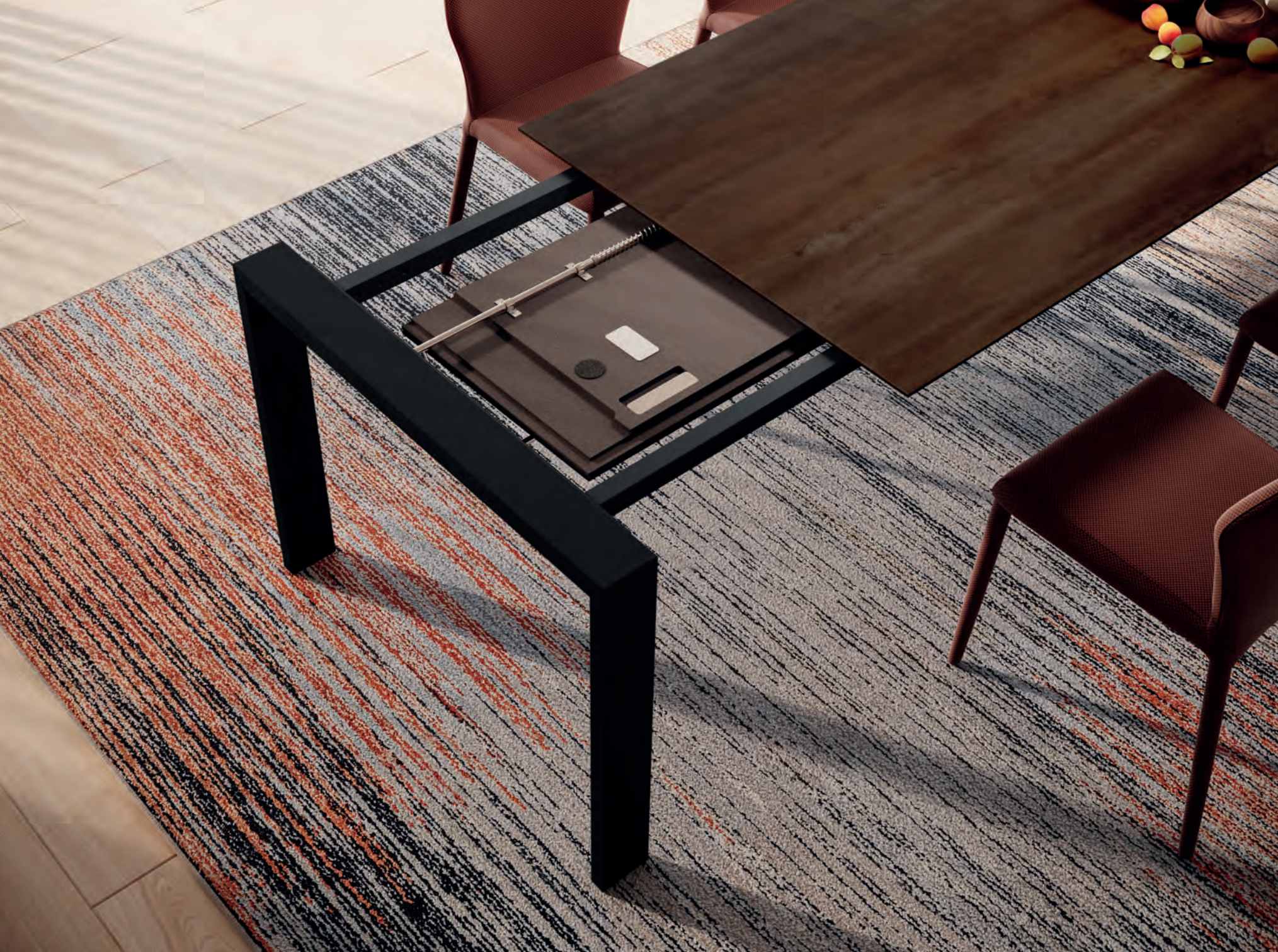
MALEO



Table MALEO - Chair ASCOLI



Simple elegance that impresses. Linear, timeless and understated, MALEO harmoniously adapts to any environment. With its jet black aluminium legs, MALEO embodies elegance and stability – creating a perfect foundation for memorable moments.



Thanks to the innovative outward-extending leg mechanism, the table extends effortlessly to one side (unlike a synchronised extension system that stretches in both directions). The frame elegantly extends outwards. Despite its slim extension profile measuring just 40 mm tall, MALEO remains extraordinarily stable. With maximum legroom and perfect for chairs with armrests, MALEO impresses due to its stability – without any sagging. Its profile is the only one of its kind on the market. No other is slimmer – for maximum elegance and functionality.

The extension system



The extension is practically stowed as a folding insert directly under the table top. The supporting aluminium profile underneath is available in a natural anodised or an elegant black anodised finish. To ensure perfect harmony between the table top and profile, the exterior can be varnished in any colour or clad with fine walnut and oak veneers.



Space for every occasion. Whether used to host guests who've just popped round or cater to the whole family for the festive season – short becomes long or long becomes even longer in just a few simple steps. Extendible (from max. 220 cm) by 2 x 70 cm to an impressive 3.60 metres. Various sizes ensure that the table is the perfect fit in any room.



Table PRATO - Chair PENDOLA

PRATO

The perfect fit over short or long distances

Delicate isn't an attribute that a table should pride itself on, right? PRATO proves otherwise. It's mightily proud of its delicate lines. And that's why it never sags – it is supported by highly stable beams. It virtuously combines aesthetics with functionality. Its variety of materials appeals to every taste.

PRATO cuts a fine figure with extension technology or as a fixed version. This table doesn't skimp on its charms, but it stays discreetly in the background when not in the spotlight.



PRATO



PRATO combines timeless elegance with modern aesthetics. The black brushed aluminium legs give the table a clear, striking presence and provide stability with a touch of sophistication. A real statement for stylish living.



PRATO



Table PRATO - Chair LOREO



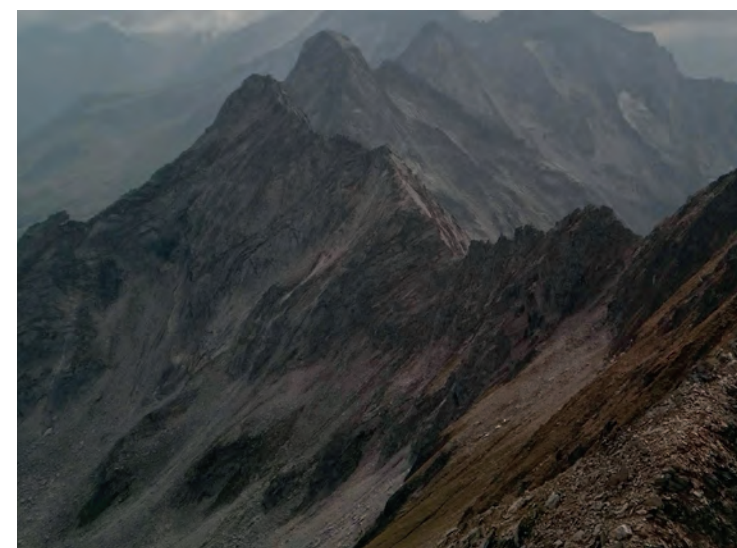
MDi - UMBRA Marron



MDi - UMBRA Marron

Discover the design and technology revolution with MDi.

Every MDi surface, crafted from the purest minerals, is a testament to aesthetic excellence and technical supremacy. Let yourself be enchanted by the impressive depth effect and dynamics of Fullbody technology. Experience precision and the tactile pleasure of high-resolution stone textures that are more than just eye-catching.





Thanks to the innovative outward-extending leg mechanism, the table extends effortlessly to one side (unlike a synchronised extension system that stretches in both directions). The frame elegantly extends outwards. Despite its slim extension profile measuring just 40 mm tall, PRATO remains extraordinarily stable. With maximum legroom and perfect for chairs with armrests, PRATO impresses due to its stability – without any sagging. Its profile is the only one of its kind on the market. No other is slimmer – for maximum elegance and functionality.

The extension system



The extension is practically stowed as a folding insert directly under the table top. The supporting aluminium profile underneath is available in a natural anodised or an elegant black anodised finish. To ensure perfect harmony between the table top and profile, the exterior can be varnished in any colour or clad with fine walnut and oak veneers.



Space for every occasion. Whether used to host guests who've just popped round or cater to the whole family for the festive season – short becomes long or long becomes even longer in just a few simple steps. Extendible from 145 cm to 2.65 metres or from 220 cm by 3 x 50 cm in sections to an impressive 3.70 metres! Various sizes ensure that the table is the perfect fit in any room.



Table TORINO - Chair LENI

TORINO

TORINO is a masterpiece of craftsmanship and style. Its beautiful aesthetics and the sophisticated table leg solution make it an impressive addition to any room. Whether in the fixed or the extendible version, this table is a fine example of good taste and attention to detail.



TORINO



TORINO combines precision craftsmanship with timeless elegance. With its clear aesthetics and sophisticated table leg solution, it becomes an eye-catcher in any room. Whether as a fixed or an extendible version – this table stands for excellent taste and attention to detail.



Choose between a solid oak or walnut frame that emphasises the material's natural beauty, or a metal version crafted with precision and care by our specialists. TORINO – as individual as your style.



Table TORINO - Chair LENI



Edge profile E9 tapered towards the outside in sandwich construction for MDi, Dekton, ceramic and glass, top thickness 28 mm, support panel colour-matched to the overlay, for top shapes in oval, boat shape, rectangular and round.

Edge profiles



Edge profile E9 tapered towards the outside, single-colored and compact, for solid wood in all types of wood and coated surfaces such as HPL, FENIX, varnish, top thickness 28 mm, for top shapes in oval, boat shaped, rectangular and round.



Edge profile 24, 28 mm thick in the middle and tapered towards the corner areas, single-colored and compact, for solid wood in all types of wood, for fixed top shapes in boat shape and rectangular.



TORINO

TORINO – adaptable, practical, beautiful. With clear lines and high-quality materials, it is a stylish highlight in any room.



Table TORINO - Chair LENI - Bench ALBA



Table TORINO - Chair LENI - Bench ALBA

TORINO

With the smart synchronised extension, the table extends by an impressive 100 cm – it's absolutely effortless and can even be done with just one hand. The position of the central base remains unchanged. While the extension is pulled out on one side, the table top automatically moves in the opposite direction. In its final position, the table is extended by one metre, with the additional surface becoming equally noticeable to the left and right of the centred frame.

The extension is stowed as a practical folding insert directly under the table top. The delicate profile is available either in elegant natural anodised aluminium or in an elegant anodised black finish.

It's perfect for guests who've just popped round – there's more space in seconds. Even when the table is fully set, extending it is effortless – there's not even any need to clear it.





E7 edge profile – tapered
for fixed tables and extendible tables

Single-coloured, compact

Top thickness: 22 to 28 mm
Top shape: Rectangular
Top material: Solid wood (all types of wood and coated surfaces such as HPL, FENIX, varnish)

Frame design: Corner leg tables, centre leg



E7 edge profile – tapered
for fixed tables and extendible tables

Single-coloured in sandwich construction, support panel colour-matched to the overlay

Top thickness: 22 mm
Top shape: Rectangular
Top material: For all applied surfaces such as glass, MVi, MDi and ceramic

Frame design: Corner leg tables, centre leg



E7 edge profile – tapered
for fixed tables and extendible tables

Two-toned in sandwich construction, support panel in a different colour to the overlay (e.g. black)

Top thickness: 22 mm
Top shape: Rectangular
Top material: For all applied surfaces such as glass, MVi, MDi and ceramic

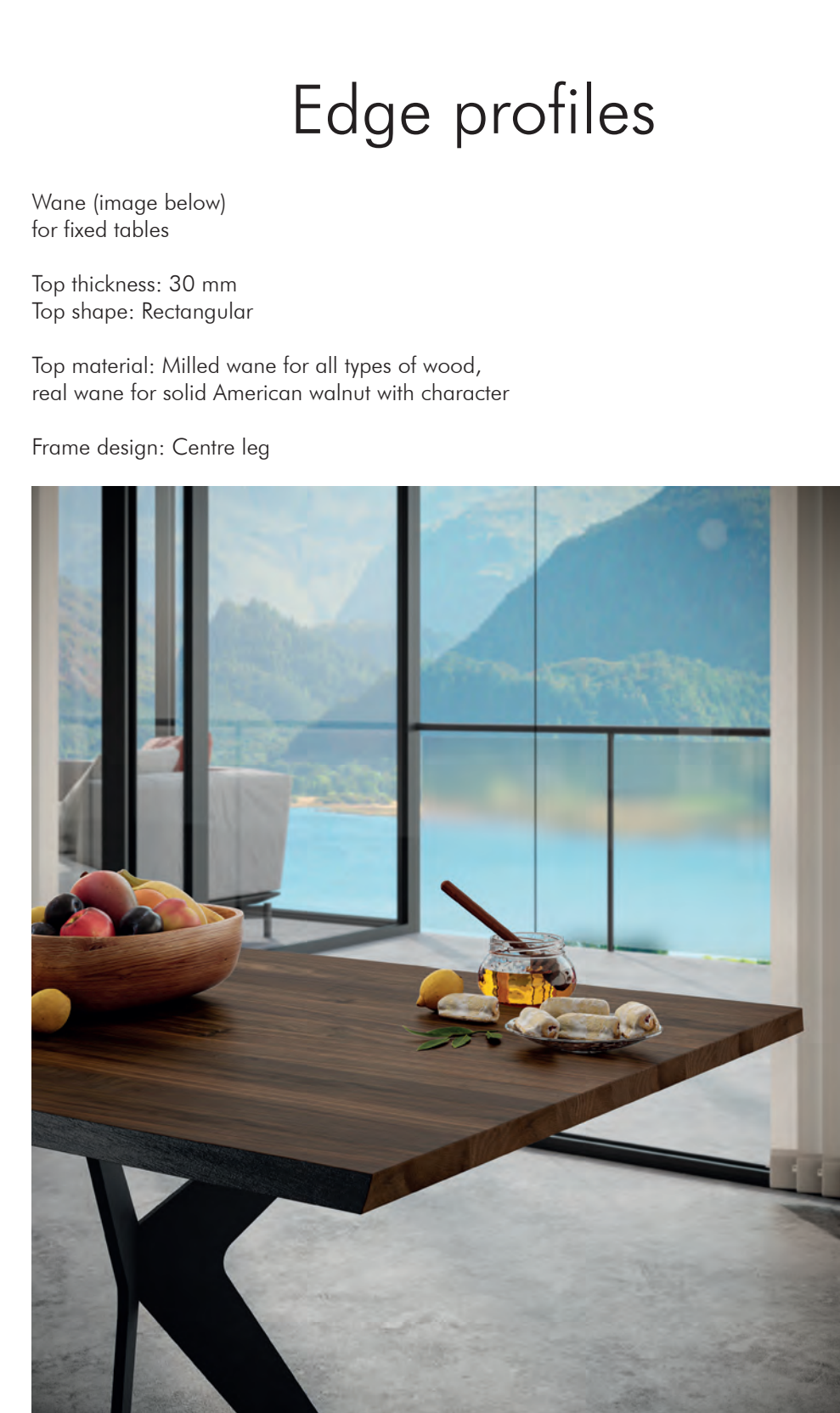
Frame design: Corner leg tables, centre leg



E0 edge profile – straight cut (image above)
for fixed tables

Top thickness: 30 mm
Top shape: Rectangular
Top material: Solid wood (all types of wood)

Frame design: Centre leg



Edge profiles

Wane (image below)
for fixed tables

Top thickness: 30 mm
Top shape: Rectangular

Top material: Milled wane for all types of wood, real wane for solid American walnut with character

Frame design: Centre leg



Table ALIANO

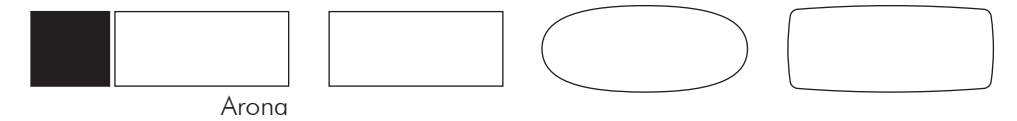
ALIANO

Straight to the point with the essentials

ALIANO impressively demonstrates how to achieve maximum impact with minimalist elegance. Its concept? Purism at its best: the table top and base. Nothing more, nothing less. For the base, ALIANO relies on slim panels made of raw iron, wood or elegant varnish. The table tops – available in a rectangular, oval or boat shape (the choice is yours) – draw on the full Willisau variety and leave nothing to be desired.

ALIANO is a true free spirit that adapts to any environment.

On the next page, ARONA shows how the tried-and-tested concept offers even more flexibility with our innovative synchronised extension technology. Together, they create new possibilities – simply strong.





ARONA

ARONA combines the best of design and function. With its synchronised extension technology, it offers maximum flexibility while convincing with aesthetic perfection.



Measuring an impressive up to 3.40 metres long and even longer if desired, ARONA becomes the highlight in any room. Solid wood in its purest form, complemented by smart technology that is effortless to use. One particularly impressive feature is the continuous grain from the table top to the extension. A seamless transition that shows the natural beauty of American walnut wood in all its glory – as if made of one piece, from start to finish.



Table ARONA - Chair LENI - Bench ALBA



Table LINEA - Chair SORA

LINEA

Flexibility at its best

Whether round, boat-shaped, rectangular or oval – LINEA masters every shape with style. Different table edges in solid wood impressively round off its profile. With a wide selection of materials, LINEA offers countless possibilities to meet every requirement and taste.



LINEA



The centerpiece for special moments. LINEA stands for more than just design – it creates a place where life comes together.



With its characteristic grain and natural radiance, oak is the perfect choice. This symbol of strength and durability gives LINEA warmth and timeless elegance that finds a special place in any home.



Table LINEA - Chair BLUES



LINEA

The E24 table edge profile impresses with a special design. Measuring 28 mm thick in the centre, it elegantly tapers towards the corner areas. This subtle shaping gives the table a light and harmonious appearance without compromising on stability. A detail that perfectly combines functionality and aesthetics.



Table LINEA - Chair PENDOLA



Table PILASTRO - Chair ASSISI

PILASTRO

The centrepiece for your special moments

PILASTRO is much more than just a table – it is the key place for unforgettable experiences. With its elegant column made of high-quality leather or fine fabric, PILASTRO simply exudes luxury and stability and becomes an eye-catcher in any room.

Whether round, boat-shaped, rectangular or oval – PILASTRO adapts to your needs while always remaining a highlight. The table top, available in select solid wood or decorative MDI as an option, creates a harmonious contrast to the column's modern structure, uniting timeless aesthetics and modern design.

Design: Klaus Schneider





PILASTRO

Elegance at its best. The base can be customised. Choose between classic leather or one of our numerous high-quality fabrics, perfectly matched to the chair for a harmonious overall appearance.

The boat shape impresses with its softly curved, precisely crafted contours. It is a testament to masterful craftsmanship that unites balance, aesthetics and functionality in ideal harmony. It's a table that makes a statement and adds an exclusive touch to any room.

This is where we gather to spend time together with family and friends, to relax and to experience special moments. PILASTRO creates the ideal setting for what truly matters: the time we spend together.





PILASTRO

Chairs and table in perfect harmony. Customised according to your wishes thanks to fine materials and a rich selection.



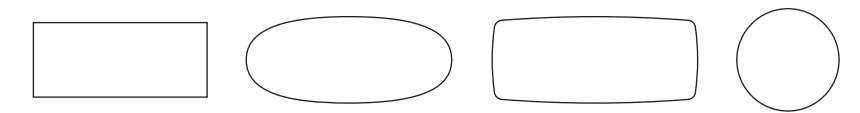
70 | 71



Table AURORA - Chair LENI

AURORA

AURORA brings form and function into harmony. Whether round, boat-shaped, rectangular or oval – every single silhouette underlines its timeless elegance. With a versatile selection of high-quality materials, AURORA effortlessly adapts to any style and requirement and invites you to stay a while.



AURORA



Round and organic shapes create a harmonious atmosphere and bring softness and balance into any room. They make rooms appear more spacious and give them an inviting air of lightness. It becomes particularly exciting when round shapes are combined with clear, straight lines – an interplay that perfectly unites playfulness and balance.





Table MODENA 40 - Chair BOSA

MODENA 40

MODENA 40 masters the art of being both round and flexible at the same time. Its surface can be extended with a simple movement, creating space for larger gatherings. Its solid base plate and sturdy column guarantee stability, even when things get lively at the table.

MODENA 40 also feels at home when space is in short supply. Its compact design and effortless extension operation make it the ideal companion for any occasion. Small on space, big on function.

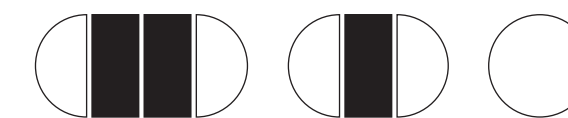




Table MODENA 40 - Chair BOSÀ

MODENA 40



From a compact round table to a generously sized dining space – MODENA 40 adapts in no time. Even when things get lively at the table, it is still a firm foundation for unforgettable moments.



*Side tables,
bistro tables and bar tables*



Side tables LEVO

LEVO

Rectangular, square and totally practical. LEVO is the versatile table that harmoniously fits into any environment. Whether in private homes or public spaces, LEVO is always ready for use. Its variable design makes it a true artistic talent.

LEVO's variable design makes individual design statements and adapts to any room concept.

Designer: Rainer Bachschmid



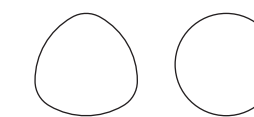


Side tables RONDO and POLYGON

RONDO & POLYGON

The POLYGON and RONDO side tables become the highlight of any living room. They combine elegance with pure modernity. Their neutral design harmonises with all surroundings and seamlessly integrates into your existing ensemble. They are a statement of calm and clarity, characterised by their clear design language.

Whether they have a polygonal or round table top, experience how these side tables skilfully round off your living room while always conveying a sense of perfection.



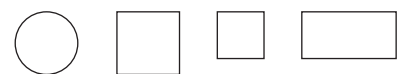


Beistellische RONDO und POLYGON

AURORA

The AURORA bistro and bar tables stand for playful elegance and limitless possibilities. Whether as a centerpiece for conversations or as a practical companion, they harmoniously combine both form and material and grant every modern design wish.

Thanks to the rich selection of dimensions and materials, the tables in the AURORA series are not only highlights as dining, bistro or bar tables. They can also be used as stylish side tables. Attractive, versatile and unmistakably AURORA.



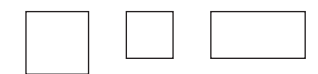
Bistro and bar tables AURORA - Chairs and bar stools CAPRI

Bistro and bar tables DINO - Chairs and bar stools AMBIENT

DINO

DINO impresses due to its simple elegance and harmonious presence. Whether used as a bistro or bar table, its slim, fine design effortlessly fits into any ambience – stylish, elegant and yet understated.

Its versatility also makes it the perfect complement as a side table in various dimensions. DINO – subtle, yet still a statement.



Square



Dino



Varino

Extendable



Maleo



Prato

Rectangular



Aurora



Linea



Pilastro



Aliano



Torino

Boat-shaped



Aurora



Linea



Pilastro



Aliano



Torino

Oval



Aurora



Linea



Pilastro



Aliano



Torino

Extendable



Arona

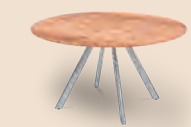


Torino



Modena

Round



Aurora



Lineo



Pilastro



Modena

Side tables / Bistro tables / Bar tables



Our tables at a glance.



Leni



Leni



Cala



Assisi



Pendola



Pendola



Ambient



Iseo



Leni



Leni



Cala



Classic



Pendola



Pendola



Ambient



Iseo



Leni



Leni



Cala



Sora



Pendola



Pendola



Ambient



Iseo



Leni



Leni



Cala



Sora



Pendola



Pendola



Ambient



Iseo



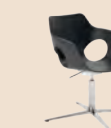
52



45



Sora



Vita



Vita



Bosa



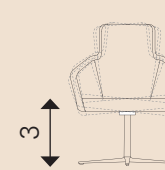
Iseo



Vinci



Dondola^{®3}
DAS ORIGINAL



3



Loreo



Vinci

Dondola^{® 3} technology invisibly built-in under the seat shell decouples the rigid connection to the base frame. The 3D flexibility in the seat surface prevents an unchanged sitting pattern for hours on end and promotes continuously dynamic, muscle-activating sitting in motion.

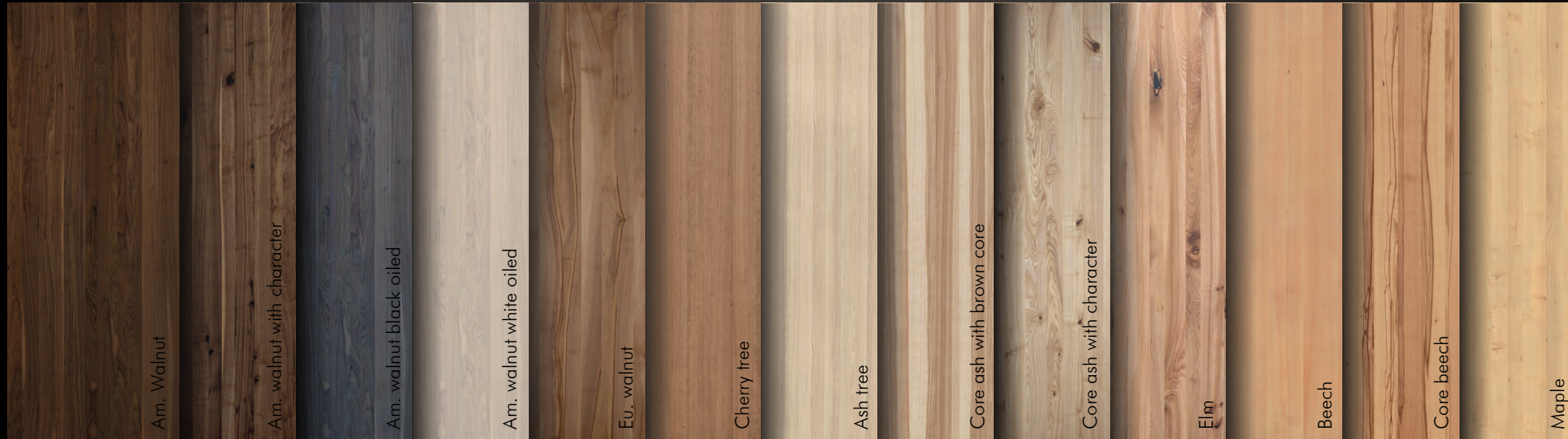


Fano



Our seating furniture at a glance.





Our wood

The tree – uniquely grown

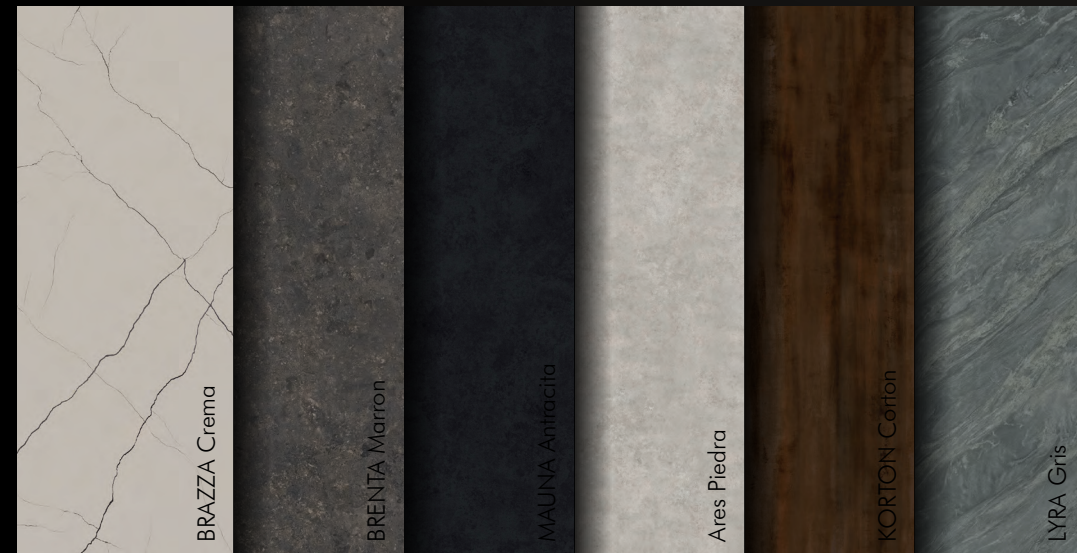
Wood, one of the oldest materials known to mankind, has lost none of its fascination. Its warm colours and natural surfaces radiate a sense of harmony and timelessness that has captivated people since time immemorial.

In Willisau, we attach a great deal of importance to selecting our wood, veneer and wood-based materials carefully. Natural features such as shades, knot formations, fine cracks or intergrowths tell the unique story of each tree, making every piece of furniture unmistakably one-of-a-kind. A piece of nature that's perfect for you.

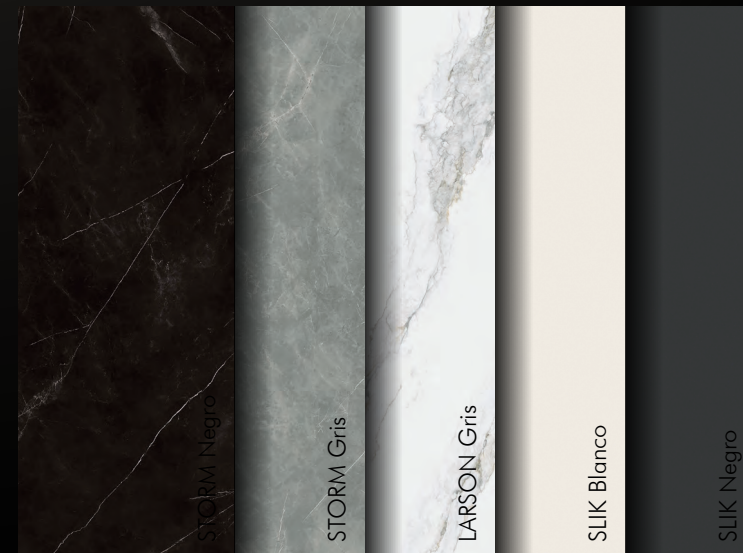
MDi 4 mm Bush-hammered



MDi 4 mm Digital Texture



MDi 4 mm Natural



A material that looks good and feels good.

MDi (Minerals, Design, innovation) is made from minerals of the highest purity that are melted in a revolutionary process at high temperatures. This base material gives the surface exceptional technical, surface-related and aesthetic characteristics.

MDi creates surfaces of astonishing beauty. With Fullbody technology, powders can be decorated while still dry to bring a unique depth and movement to the surface. The precision of the high-resolution stone textures becomes immediately apparent and impressively underlines the tactile experience of MDi surfaces.

Unlike the pressing method that is standard in the industry, digital glazes are added to top designs using the digital texture process. This creates unique textures that achieve a matt effect and prevent light reflections. These surfaces receive delicate and very pleasant reliefs. With a texture that is extremely delicate to the touch, a play of light, shadow and volume that will delight all onlookers can also be achieved.

Thanks to our responsible use of natural resources and the high recyclability percentage, MDi stands out as a particularly sustainable surface option.

Dekton 4 mm



Our ceramic

Inspired by nature.

Ceramic is a revolutionary and unique product – harder than granite, lighter than aluminium, flexible and workable with techniques that are suitable for glass and natural stone. Laboratories and research institutes of international repute have certified through rigorous testing the exceptional quality of the ceramics used by Willisau Switzerland. Our ceramics are characterised by their technological and aesthetic features. It is an extremely versatile surface with great visual impact and is simultaneously resistant, reliable, practical and durable.

Dekton

The technically ultra-compact stone.

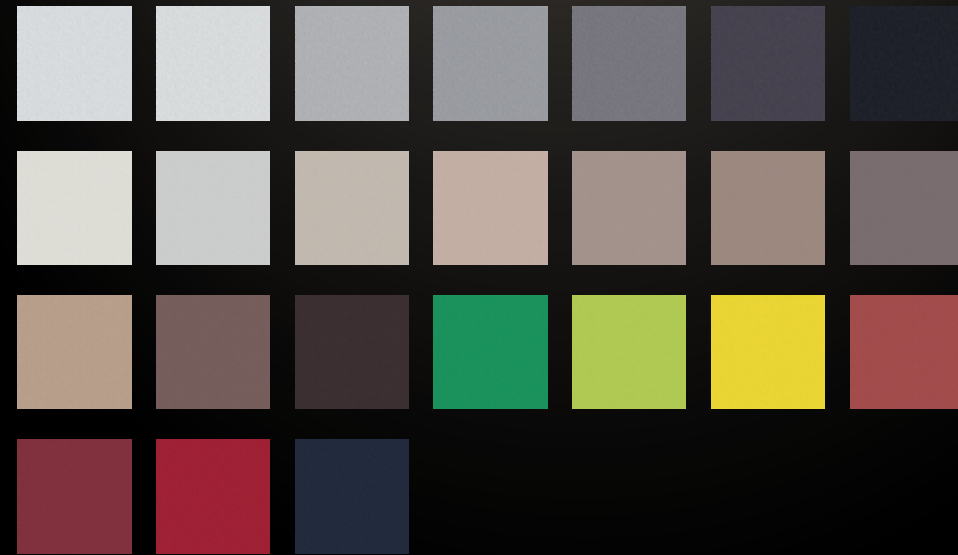
We have natural stone broken down into its component parts, revealing its unique beauty and strength, to recode and enhance it through technology into Dekton: The technically ultra-compact stone.

Dekton inspires the future of design by creating emotive furniture where beauty and functionality coexist in perfect synergy. In a sophisticated blend of 20 natural minerals, through the exclusive use of TSP technology we are able to fuse mineral particles so they bond together.

Ceramic 3 mm



HPL Uni



HPL – durable and easy to maintain.

In addition to ceramic, the high-quality HPL surface is trending in table manufacturing. This high-pressure laminate (HPL) surface is capable of withstanding a great deal. The table tops are highly resistant to various types of wear and tear.

They are largely acid- and crack-resistant, resistant to moisture, heat-resistant up to 180 degrees Celsius, lightfast and colourfast. The tops are very durable and emission-free. They consist of around 70% cellulose and 30% nature-inspired resins.

FENIX



FENIX – the original.

Thanks to its distinctive technological features and timeless elegance, FENIX offers technical and aesthetic answers to interior design trends. FENIX's outer surface is characterised by the use of next-generation acrylic resins, which are cured and fixed using an electron beam curing process. This gives them unique properties. At first glance, the surfaces stand out due to their super-matt appearance. When you touch them, you can feel how pleasantly soft they are and, surprisingly, you will leave behind no fingerprints. Thermal repair of superficial micro-scratches is also possible.

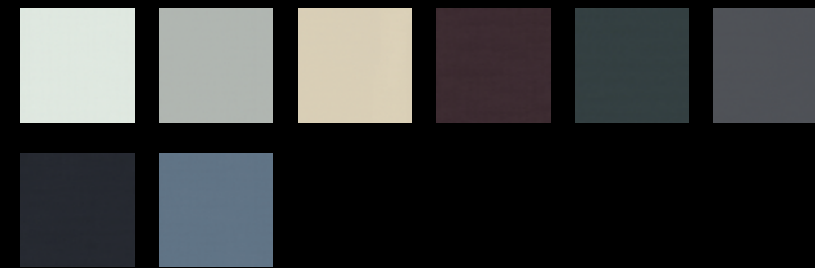
XM HPL Strato Soft.

This surface is practically reflection-free due to its structure and has anti-fingerprint properties (clean-touch). Additionally, the appearance impresses with enormous colour transparency and depth, which goes hand in hand with a pleasantly warm, velvety soft feel.

HPL Lava – the expressive one.

Smooth yet porous, matt and rich in contrast. A surface that is set apart by a special surface structure effect modelled on natural lava stone.

XM HPL Strato Soft



HPL Lava



Varnished surfaces are treated with a durable polyurethane varnish, resulting in a (partially) closed-pore surface. The varnish cures the surface and largely protects it from any stains.

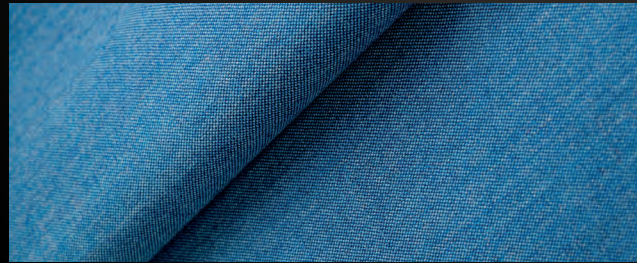
GLASS – aesthetic, smooth and homogeneous

Glass is a natural product. The main raw materials are quartz sand, limestone and soda. The untreated, hard surface impresses due to its chemical resistance, resistance to stains, the fact that it is easy to clean and its absolute hygiene, not to mention its aesthetic component.

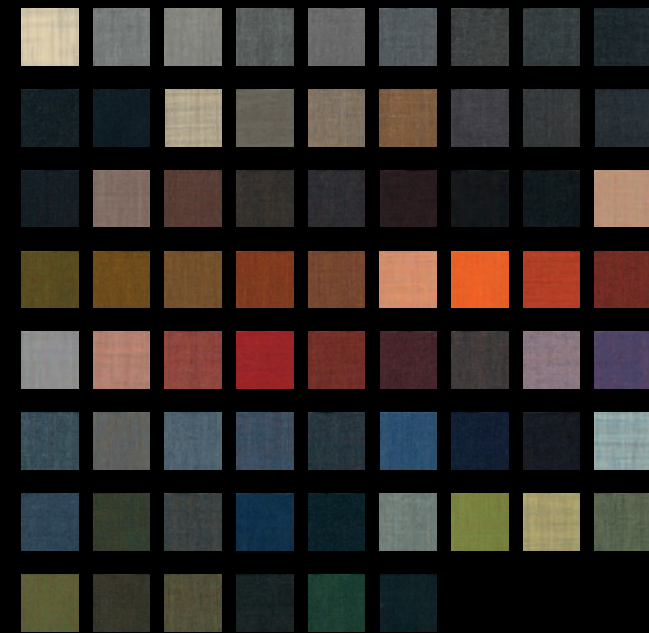
Varnishes and glass varnished on the rear surface with a mirror finish or satinised surface



kvadrat - Remix 3



Remix 3 appears to be in one solid colour from a distance, but on closer inspection reveals subtle details and contrasts. The textile has a firm, minimalist weave and gets its vibrant interplay of colours from a combination of two different melange yarns, which together create three shades.



Design: Giulio Ridolfo

kvadrat - Hero Heather



Hero Heather is a felted wool upholstery fabric by Patricia Urquiola that brings a fresh perspective to the world of mottled textiles. It consists of a yarn-dyed warp and a fabric-dyed weft, thus offering exceptional colour variety and texture.

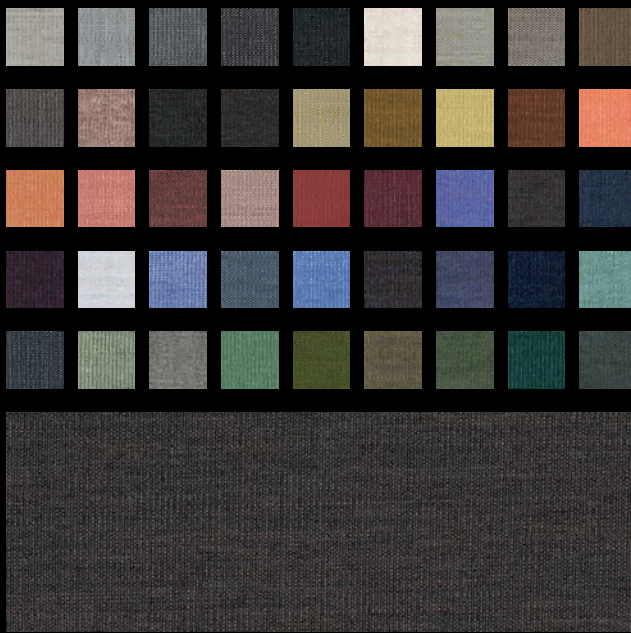


Design: Patricia Urquiola

kvadrat - Canvas 2

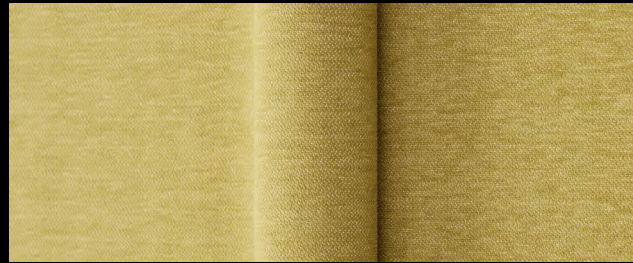


Canvas's mottled yarn combines three colours, with six shades in each colour combination. So the textile offers exceptional colour variety and a fascinating expression. Viewed from a distance, it appears to be in one solid colour. Up close, shimmering shades, fine contrasts and an elegant structure are revealed.

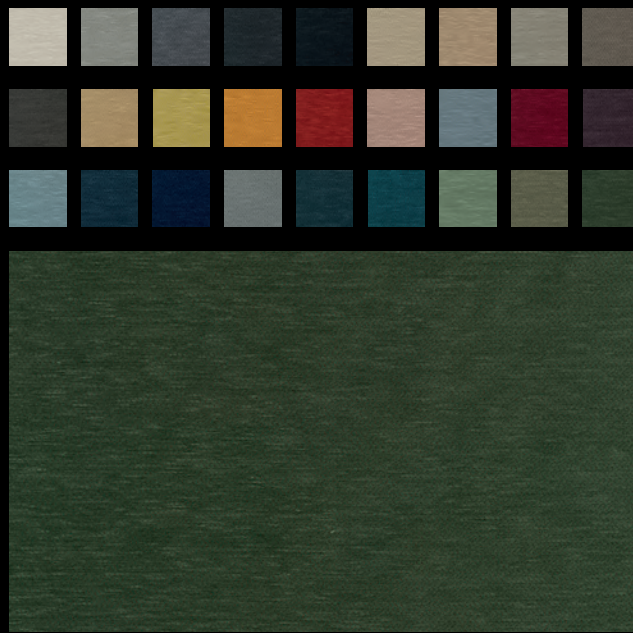


Design: Giulio Ridolfo

kvadrat - Still

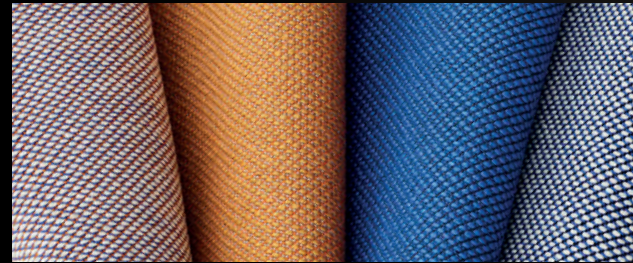


Still is an exceptionally soft chenille upholstery fabric with a natural appearance. It has a slightly striped expression that runs in the direction of the weft. Although Still is made from synthetic fibres, it has a subtly matt sheen and a dry feel that is typically associated with cotton.

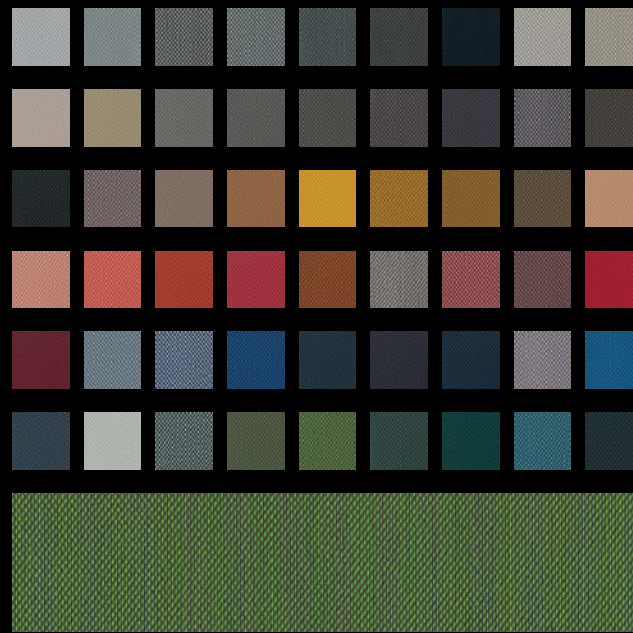


Design: Georgina Wright

kvadrat - Steelcut Trio 3

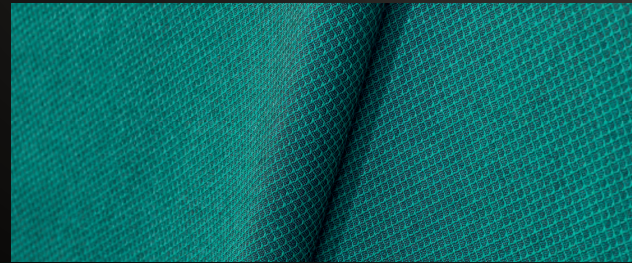


Steelcut Trio is a hard-wearing upholstery fabric made from wool. The 3D surface of Steelcut Trio is reminiscent of small pyramids or studs. Despite the complexity of the textile's innovative weave, it has a simple, precise appearance. Steelcut Trio is yarn-dyed and made from yarns in three different colours.

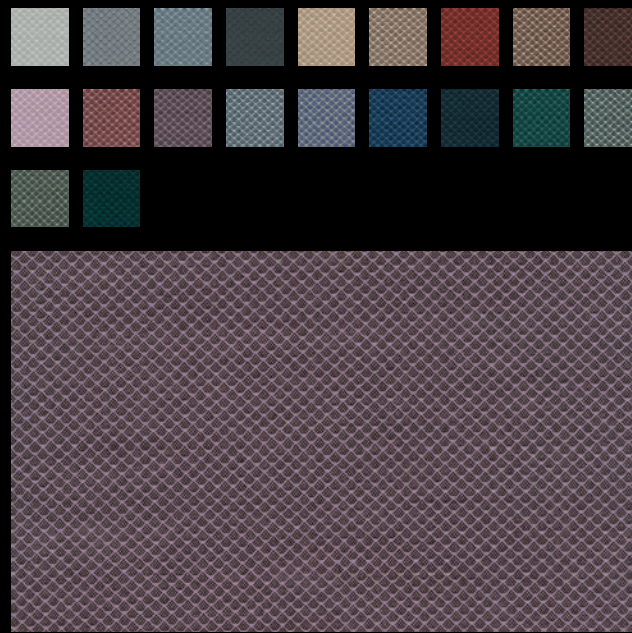


Design: Frans Dijkmeijer

kvadrat - Jaali

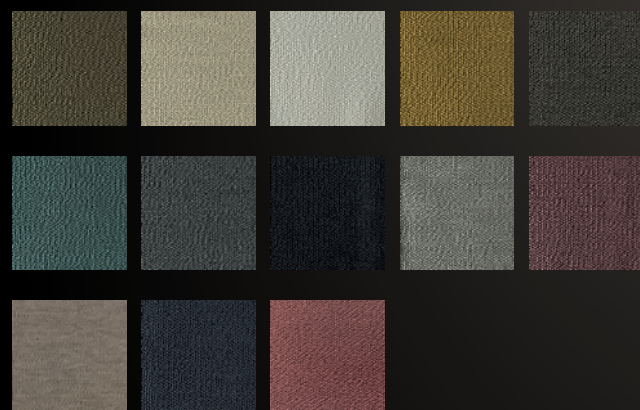


Jaali is an architectural woollen upholstery textile, which fuses pattern and texture to intriguing effect. Viewed from close-up, it reveals a fine net-like grid of hexagonal shapes. However, when seen from a distance, this pattern takes on the expression of a textured structure. Jaali is constructed with two unicoloured yarns.

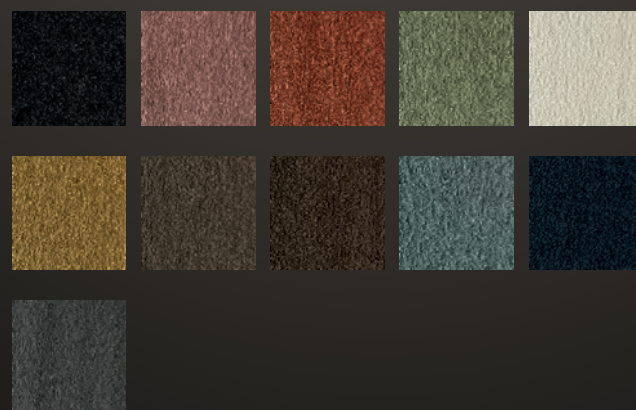


Design: Doshi Levien

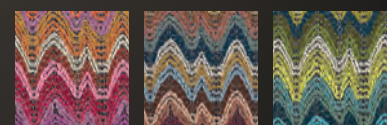
Rohleder - Q2 Ocean 111-92



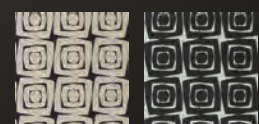
Rohleder - Q2 Ono 238700



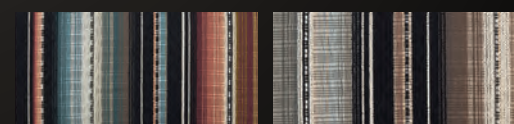
Rohleder - Q2 Ola 23720



Rohleder - Q2 Turtle 23736



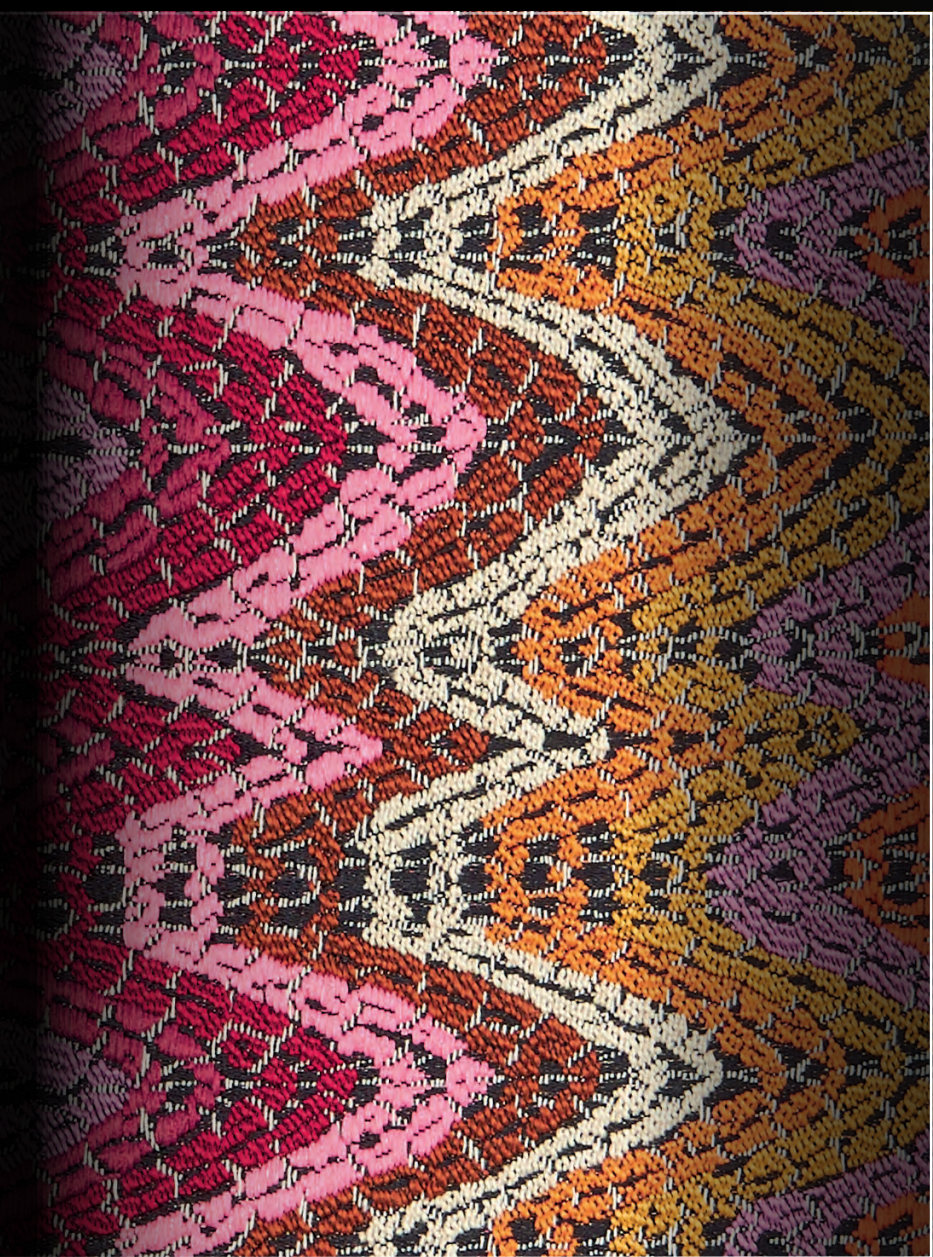
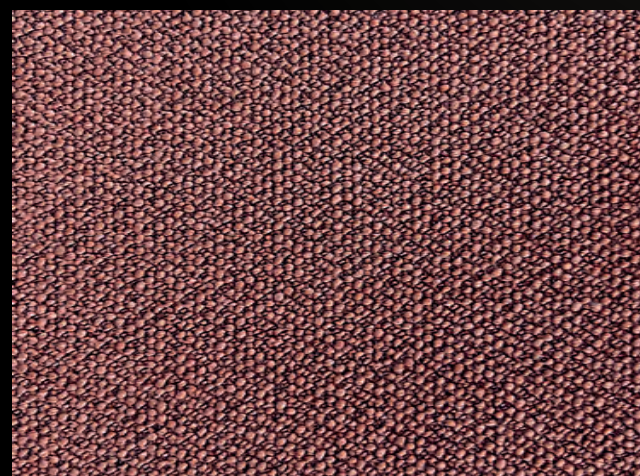
Rohleder - Q2 Maya 23737



With its grainy texture, Q2 Ocean is reminiscent of linen – the plain fabric decorates both modern and classic furniture equally well and appears elegant and sophisticated or contemporary and casual depending on the furniture’s design language.

A subtle beauty, the single-coloured fabric Q2 Ono is enchanting with its sophisticated structure. The blend of different yarns with chenille and bouclé creates a natural-looking, exciting surface that is soft to the touch.

The fabrics Q2 Maya, Ola and Turtle from the Tulum Collection impress due to their ethnic style and coarse textures. Their handcrafted appearance and striking patterns make clear statements.



Cultural treasures full of creative craftsmanship and tradition. That’s Rohleder.

Welcome to the fascinating world of TULUM – a textile collection inspired by the traditional patterns and cultural treasures of Mexico. The Tulum Collection takes us on an exciting journey through Mexico’s art and culture. Every single design in this collection reflects Mexico’s rich past and vibrant present. Artfully designed patterns tell a story of centuries-old craftsmanship and creativity, while the colour worlds capture the essence of the country’s warmth and energy. The two beautiful solid articles Ocean and Ono complement one another perfectly.

Q2 – a fresh desire for quality.

Q2 is the upholstery material for sophisticated living requirements. An advanced high-tech fabric that combines aesthetic values with the highest quality requirements in an exemplary manner.

Q2 is a high-quality, fully synthetic upholstery fabric with pleasantly dry touch that offers all the convenience you would expect from an upholstery fabric: modern, exceptionally sophisticated aesthetics, superior quality and durability, not to mention easy care and cleaning properties. All this in conjunction with a comprehensive five-year manufacturer’s warranty.

All household stains such as red wine, grass or denim can be easily removed with standard cleaning agents (e.g. soap, acetone or bleach solutions).

Q2 is made from fully synthetic, selected materials and offers an excellent seat climate. There is no heat or moisture build-up.

Leather ROMA



Leather IDEA



Leather SCOTT



Faux leather



Genuine leather – individuality testifies to natural origin

We offer high-quality leather in various trendy colours for upholstering our seating furniture.

Leather is a magnificent product. It has style and an elegant appearance, and is durable. Leather is a unique natural product made from animal hides. Each hide tanned into leather has its own unique, lively grain pattern with natural surface structures such as pores, scars, wrinkles and folds that nature has drawn. Natural characteristics are not flaws or defects in our leather qualities. Natural markings in the hide are hallmarks of the material's authenticity.

Faux leather – the vegan alternative to genuine leather

Our vinyl faux leathers stand for sophisticated requirements, as they are simultaneously robust, refined and easy to maintain. These synthetic leathers with their classic, timeless leather grain, comfortable softness and pleasant touch offer the best properties for upholstering chairs, bar stools and benches.

© 2025 WILLISAU SWITZERLAND c/o Tisch & Stuhl Willisau AG

Willisau Switzerland reserves the right to modify or amend the descriptions and specifications contained in this catalogue in accordance with technical developments and material availability, and assumes no liability for any inaccuracies contained herein. Although every effort has been made to accurately present the products and materials, due to various factors such as lighting and print reproduction we cannot guarantee that the colours shown will exactly match the colour of the actual product.

Design, images and partnerships

Design and graphic design: Markus Heß // Text: Livia Voellmy, Markus Heß // Images: Bieffe Render SRL (biefferender.com) // Partnership in image projects with OLIGO Lichttechnik GmbH, Sankt Augustin, Germany (oligo.de) – Oligo-branded lights included in ambience photographs on pages 29, 32-33, 40, 66-68, 71, 78-79, 82, 87, 88-89 // Partnership in image projects with NEGRA AG – Carpet and Home, Zurich, Switzerland (negra.ch) – NEGRA-branded carpets included in ambience photographs on pages 28-29, 32-35, 40-43, 66-69, 80-81, 84-87 // Print: PFITZER GmbH & Co. KG, DE Renningen (pfitzer.de)

Willisau Switzerland would like to sincerely thank all its colleagues, employees and partners who were involved in creating this catalogue.

WILLISAU SWITZERLAND c/o Tisch & Stuhl Willisau AG . Ettiswilerstrasse 26 . CH 6130 Willisau . Schweiz . +41 41 972 70 10 . info@willisau-switzerland.ch . willisau-switzerland.ch

     Share your Willisau moments with others: @willisau_switzerland



WILLISAU
SWITZERLAND